



# PORTS OF CAMPECHE

CRECER EN GRANDE  
CAMPECHE 2015-2021





# PORTS OF CAMPECHE



**SCT**  
SECRETARÍA DE  
COMUNICACIONES  
Y TRANSPORTES



CRECER EN GRANDE  
CAMPECHE 2015-2021





# FEATURES



Basin 1

Basin 2

Expansion Area  
(Basin 4)

Basin 3

Navigation Channel

Surface: 80 ha / 197 acres

Docking Berth: 4,500m /  
4,920yds

Draft: -4.5 m / -14 ft

Navigation channel:  
11 miles of length,  
60 yds of width.

3 Basins:

Basin 1: 33 acres

Basin 2: 22 acres

Basin 3: 21 acres



# PORT MAIN OPERATIONS



- General cargo for offshore activities

• 1

- spare parts, tools, motors, etc.

- Personnel transportation

• 2

- transferred to oil rigs and vessels operating offshore

- Liquids

• 3

- like sludge and fuel for the operation of machinery

- Minerals

• 4

- such as stone materials for laying pipes, cement wells and others.





# DOMESTIC & FOREIGN COMPANIES IN THE PORT



CRECER EN GRANDE  
CAMPECHE 2015-2021



Schlumberger

HALLIBURTON



Falck Nutec

COSL



GLOBAL DRILLING DE MÉXICO



MEXSSUB



Instaladora y Constructora, S.A. de C.V.



PERFORADORA  
MEXICO





- 
- The map illustrates the urban layout of the 'Barrio de la Cruz' in the Municipality of San Juan de los Rios. It features a large orange-shaded area representing the proposed urbanization, a blue-shaded area representing the existing urban area, and a green-shaded area representing the proposed urbanization. The map includes various streets, plots, and landmarks, such as 'CALLE UNO SUR', 'CALLE PROLONGACION UNO SUR', 'DARSENA 2', 'DARSENA 3', and 'CANAL INTERIOR'. The map also shows the 'Z.F.M.T.' (Zona de Fomento Municipal) and the 'CALLE PROLONGACION UNO SUR'.



# PORT EXPANSION



**SCT**  
SECRETARÍA DE  
COMUNICACIONES  
Y TRANSPORTES



CRECER EN GRANDE  
CAMPECHE 2015-2021







# PROJECTS

*PORT OF ISLA DEL CARMEN*



CRECER EN GRANDE  
CAMPECHE 2015-2021





# OFFSHORE TERMINAL



**SCT**  
SECRETARÍA DE  
COMUNICACIONES  
Y TRANSPORTES



CRECER EN GRANDE  
CAMPECHE 2015-2021



- ✓ Main offshore support terminal for the oil industry in Mexico.
- ✓ Full service shorebase.
- ✓ Temporary storage.
- ✓ Public loading and unloading multiple-use terminal.



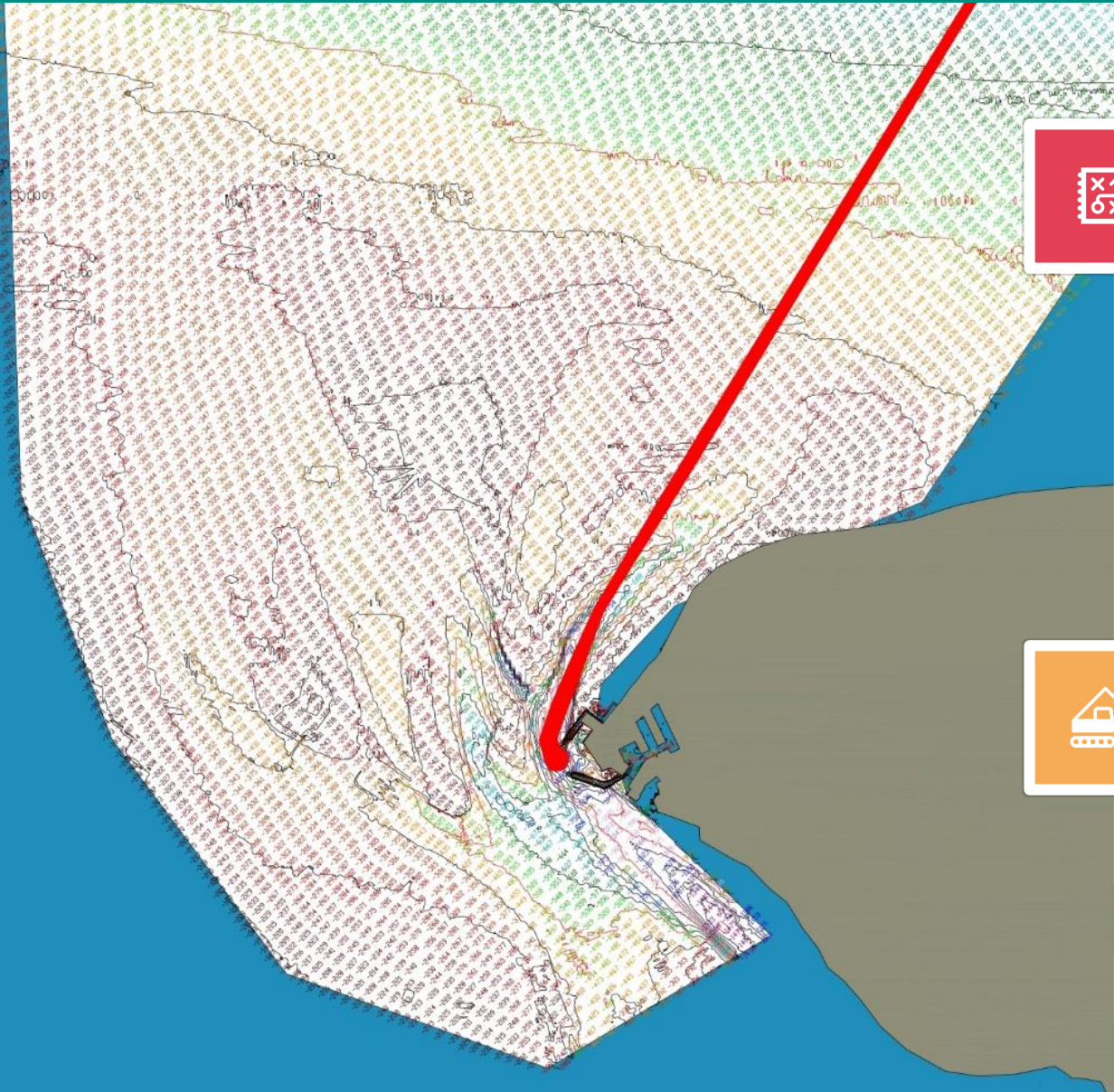
# NEW NAVIGATION CHANNEL



**SCT**  
SECRETARÍA DE  
COMUNICACIONES  
Y TRANSPORTES



CRECER EN GRANDE  
CAMPECHE 2015-2021



## Navigation Channel Dredging

Length: **6.8 miles / 11 km**

Width: **136 yards / 125 m**

Depth: **-23 ft / -7 m**



## Basin #4 Dredging

Area: **49 acre / 20 ha**

Depth: **-23 ft / -7 m**





PUERTOS DE CAMPECHE



PORT OF SEYBAPLAYA



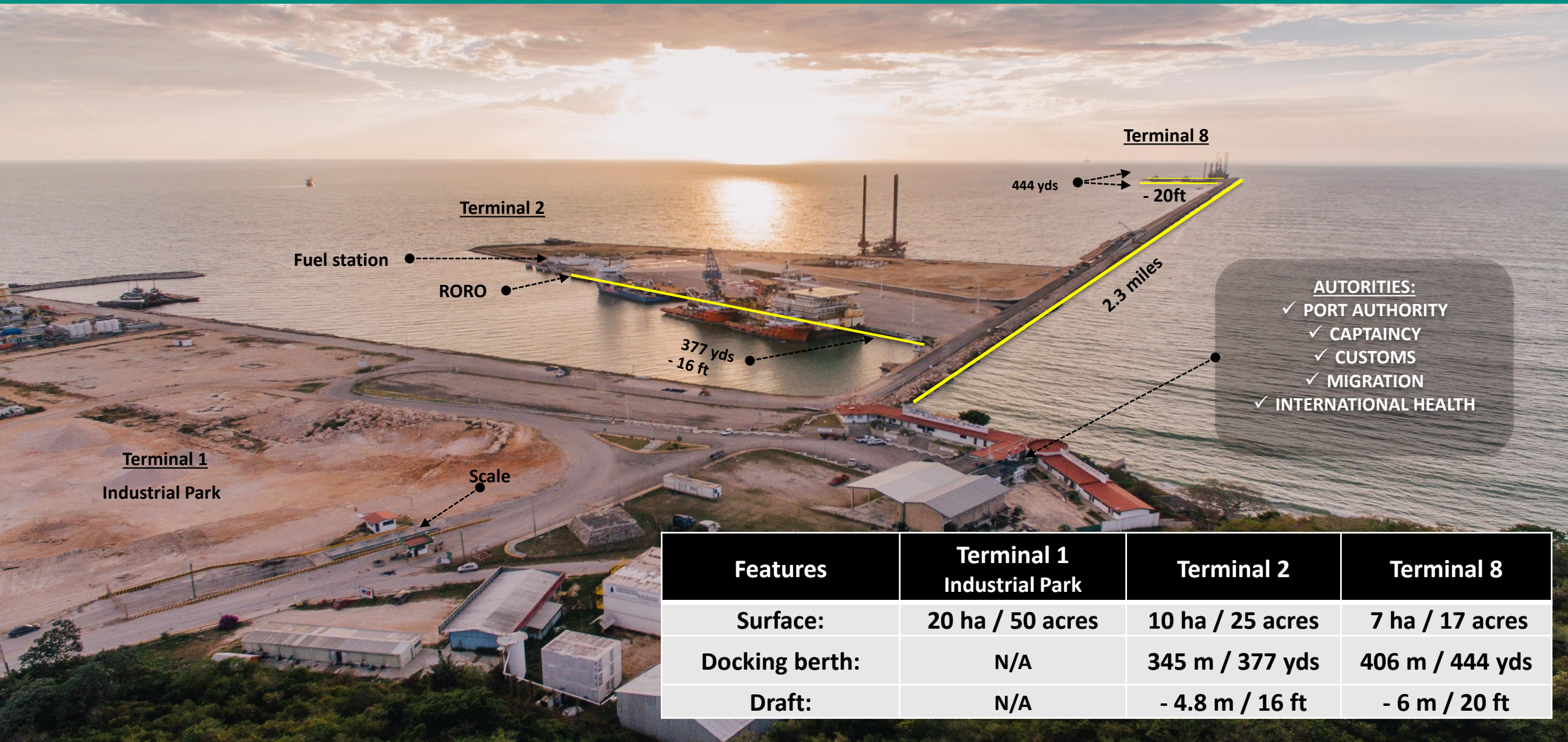
# FEATURES



**SCT**  
SECRETARÍA DE  
COMUNICACIONES  
Y TRANSPORTES



CRECER EN GRANDE  
CAMPECHE 2015-2021



- AUTORITIES:**
- ✓ PORT AUTHORITY
  - ✓ CAPTAINCY
  - ✓ CUSTOMS
  - ✓ MIGRATION
  - ✓ INTERNATIONAL HEALTH

Features	Terminal 1 Industrial Park	Terminal 2	Terminal 8
Surface:	20 ha / 50 acres	10 ha / 25 acres	7 ha / 17 acres
Docking berth:	N/A	345 m / 377 yds	406 m / 444 yds
Draft:	N/A	- 4.8 m / 16 ft	- 6 m / 20 ft



# PORT MAIN OPERATIONS



**SCT**  
SECRETARÍA DE  
COMUNICACIONES  
Y TRANSPORTES



CRECER EN GRANDE  
CAMPECHE 2015-2021



- Offshore supplying • 1
- Maintenance of drilling equipment • 2
- Maintenance of oil rigs • 3
- Maintenance of pipelines • 4
- Scrapping of oil rigs and vessels • 5





# PORT EXPANTION



**SCT**  
SECRETARÍA DE  
COMUNICACIONES  
Y TRANSPORTES



CRECER EN GRANDE  
CAMPECHE 2015-2021





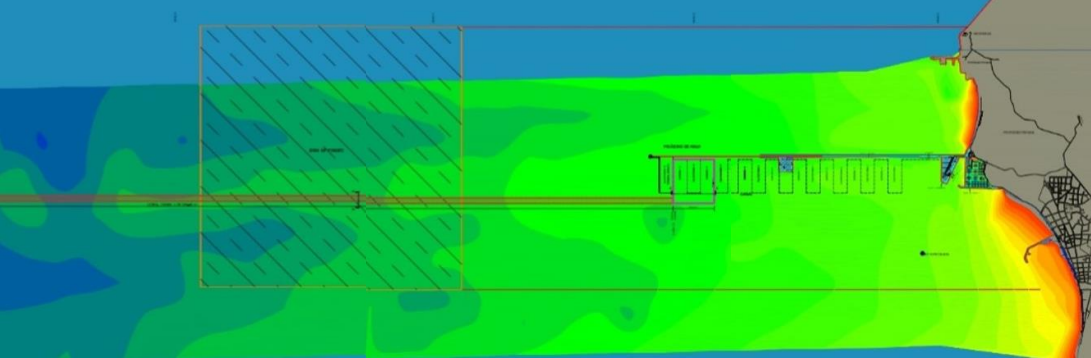


# PROJECTS

*PORT OF SEYBAPLAYA*



CRECER EN GRANDE  
CAMPECHE 2015-2021





# LNG



**SCT**  
SECRETARÍA DE  
COMUNICACIONES  
Y TRANSPORTES



CRECER EN GRANDE  
CAMPECHE 2015-2021



FSRU

15 km marine pipeline

INTERCONNECTION WITH  
MAYAKAN GAS PIPELINE

- ✓ Demand for natural gas in the peninsula: 1,400 mmcf.
- ✓ Import by tanker vessels from an LNG terminal in the United States.
- ✓ Transport to a Floating Storage and Regasification Unit (FSRU) located in the anchoring area of the Seybaplaya Port, 15 km from the coast.
- ✓ Construction of the positioning system and a marine pipeline that allows the FSRU to be interconnected with the Mayakan pipeline, which is 3 km from the Port.



# HYDROCARBONS TERMINAL



**SCT**  
SECRETARÍA DE  
COMUNICACIONES  
Y TRANSPORTES



CRECER EN GRANDE  
CAMPECHE 2015-2021



- ✓ Fuel storage and distribution terminal with a capacity of 500 thousand barrels.



# SHIPYARD



**SCT**  
SECRETARÍA DE  
COMUNICACIONES  
Y TRANSPORTES



CRECER EN GRANDE  
CAMPECHE 2015-2021



- ✓ Construction, Repair, Maintenance and Scrapping of Vessels, Oil Rigs and Naval Artifacts.



# LP GAS TERMINAL



**SCT**  
SECRETARÍA DE  
COMUNICACIONES  
Y TRANSPORTES



CRECER EN GRANDE  
CAMPECHE 2015-2021



- ✓ Storage and distribution of liquefied petroleum gas (LP Gas) with a capacity of 40,000 nominal barrels.



# COMMERCIAL TERMINAL



**SCT**  
SECRETARÍA DE  
COMUNICACIONES  
Y TRANSPORTES



CRECER EN GRANDE  
CAMPECHE 2015-2021



- ✓ General cargo.
- ✓ Agricultural and mineral bulk.



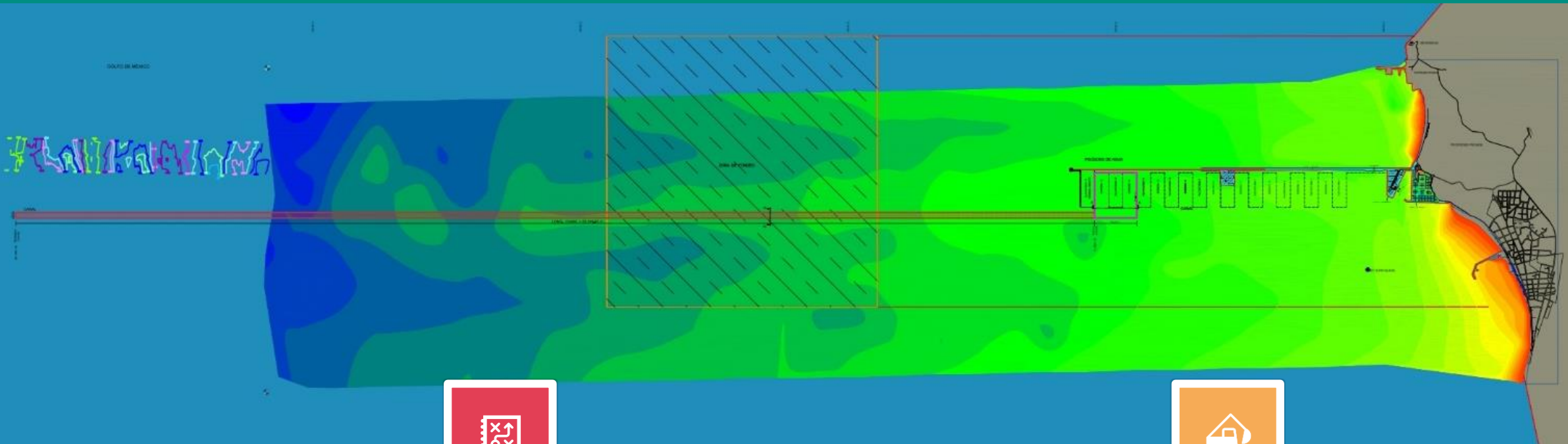
# NEW NAVIGATION CHANNEL



**SCT**  
SECRETARÍA DE  
COMUNICACIONES  
Y TRANSPORTES



CRECER EN GRANDE  
CAMPECHE 2015-2021



## Navigation Channel Dredging

Length: **12 miles / 20 km**

Width: **328 yds / 100 m**

Depth: **-39 ft / -12 m**

## Ciaboga Basin Dredging

Area: **143 acre / 58 ha**

Depth: **-39 ft / -12 m**



# THANK YOU

CRECER  GRANDE  
CAMPECHE 2015-2021



[www.puertosdecampeche.com.mx](http://www.puertosdecampeche.com.mx)



PORTS  CAMPECHE