



CAMPECHE **FRIENDLY** STATE

SEDECO
GOBIERNO DEL ESTADO
CAMPECHE 2015-2021



CRECER EN GRANDE
CAMPECHE 2015-2021



INVESTMENT CLIMATE

-  1. Security & Social Harmony
-  2. Strategic Location
-  3. Infrastructure & Connectivity
-  4. Productive Talent & Human Capital
-  5. Oil Refining Development Opportunity
-  6. Office Accommodation Proposal & Availability

1. SECURITY & SOCIAL HARMONY



We are the safest State in the country with the lowest common crime rate per 100 thousand inhabitants

97.67%

Percentage of certified elements of police in the State



More than
400 cameras
have been installed throughout the State

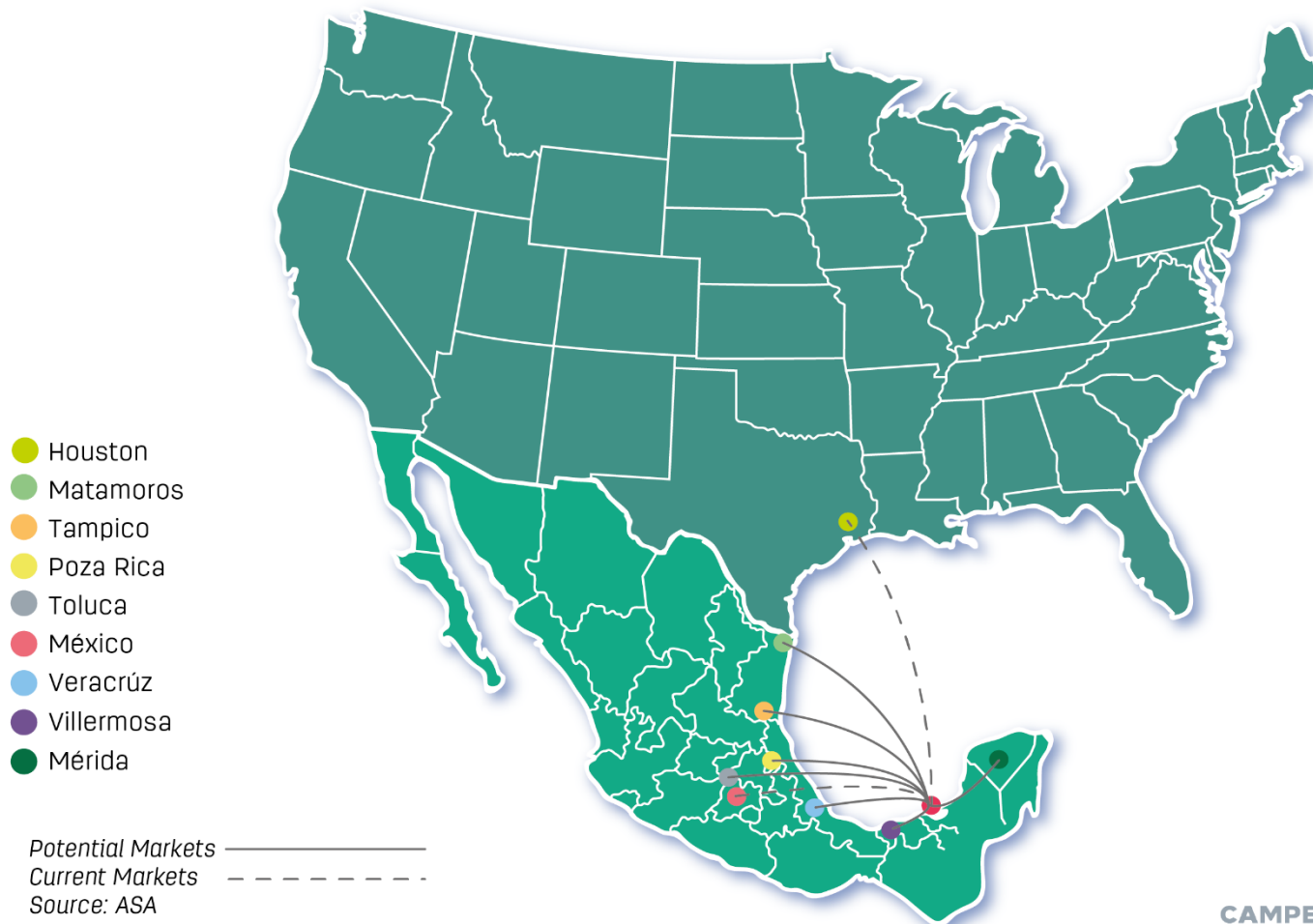


There is currently
19 license plate reader points in the State



2. STRATEGIC LOCATION

Ciudad del Carmen, potential and current markets.



2. STRATEGIC LOCATION

SEDECO
GOBIERNO DEL ESTADO
CAMPECHE 2015-2021

CRECER EN GRANDE
CAMPECHE 2015-2021

U.S. PORTS	FROM CARMEN	FROM SEYBAPLAYA
1 Brownsville, Texas	548	522
2 New Orleans, Louisiana	725	560
3 Galveston, Texas	663	618
4 Houston, Texas	682	640
5 Mobile, Alabama	750	650
6 Panama City, Florida	767	687
7 Tampa, Florida	767	660

*MILLAS NAÚTICAS



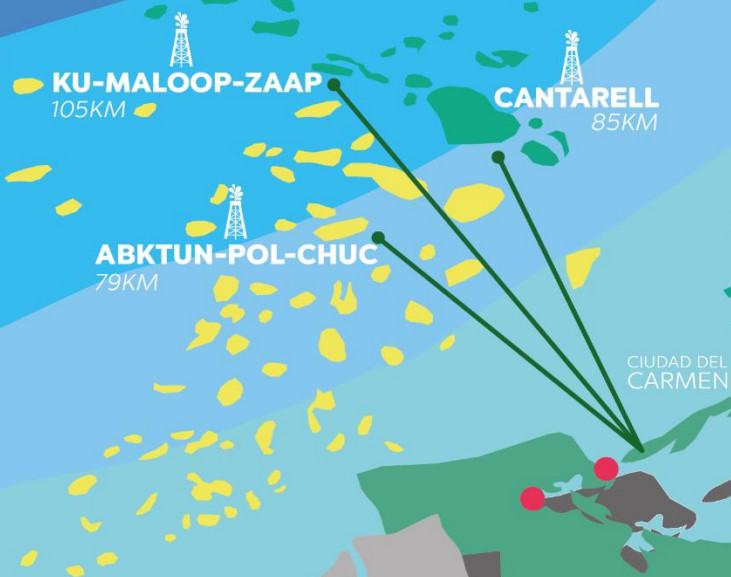
CAMPECHE ESTADO AMIGO

2. STRATEGIC LOCATION

SEDECO
GOBIERNO DEL ESTADO
CAMPECHE 2015-2021

CRECER E GRANDE
CAMPECHE 2015-2021

- HEAVY FUEL OIL
- LIGHT OIL
- GAS




Office Buildings

15


Airport

1


Heliport

1


Port

1


Industrial Parks

1


Hotels

200


Hotel Rooms

4912


Shopping Centers

8


Entertainment Centers

9


Department Stores

22


Convention Centers

6


Food & Beverage Facilities

276


Supermarkets

276


Medical Units

35


Public Sector Medical Staffing

637


Tourist Centres

9


Bus Terminals

2


Libraries

7


Research Centers

3


Institution Of Higher Education

10


Preschools

90


Elementary Schools

119


Middle Schools

39


Highschools

16


Residential Neighborhoods & Gated Communities

147

2. INFRASTRUCTURE & CONNECTIVITY IN CD. DEL CARMEN



2. INFRASTRUCTURE & CONNECTIVITY IN CD. DEL CARMEN

PORT OF ISLA DEL CARMEN



PORT OF ISLA DEL CARMEN

FEATURES

Surface Area:
197 Acres

Docking Lines:
4,920 yards
in 17 docks

Draft:
-14 ft

Navigation Channel
11 miles long
65 yards width
-14 ft general draft

3 Basins
Basin 1: 33 acres
Basin 2: 22 acres
Basin 3: 21 acres



PORT OF ISLA DEL CARMEN

Main activities inside de Port

1

General Cargo

For offshore activities

2

Personnel Movement

That is transferred to oil rigs and vessels operating offshore

3

Liquids

Like sludge and fuel for the operation of machinery

4

Minerals

Such as stone materials for laying pipes, cement wells and others





PORT OF ISLA DEL CARMEN

Competitive Advantages

1. Specialized Port in the Oil Industry
2. More than 35 years of proven experience in the industry
3. Strategic location near to the oil fields with major production.
4. International airport is 15 minutes from the port
5. Port administrated by a state port authority.
6. Number 1 ranked in national arrivals.
7. There are more than one hundred companies specialized in the oil industry are inside the port.
8. In 2018 an additional surface area of 120,000 sq m was built and increased the draft to 7m.
9. The most important port in personnel transportation to oil rigs.
10. The main Port in the offshore supply chain (pipelines, drilling equipment, goods)
11. New navigation channel will have a draft of 8m for bigger ships.



NEW INFRASTRUCTURE IN THE PORT OF CIUDAD DEL CARMEN





BUSINESS OPPORTUNITIES

1

Public Terminal for loading and offloading

2

Passenger Terminal

3

Fuel supply





3.1. PORT INFRASTRUCTURE & CONNECTIVITY

PORT OF SEYBAPLAYA



PORT OF SEYBAPLAYA

FEATURES



Platform 2

345 M of Docking Line
-4.8 M

Platform 1
Industrial park

Platform 8

406 M of Docking Line

-6 M

3.7 KM

TECHNICAL INFO:

TERMINAL 1

(In Land) "Industrial Park"
Surface: 50 acres
Turning Basin: 12.8 acres

TERMINAL 2

Surface: 25 acres
Docking Line: 377 Yards
Draft: -16 feet
Docking positions: 3

TERMINAL 8

Surface: 17 acres
Docking Line: 450 Yards
Draft: -20 feet

Authorities

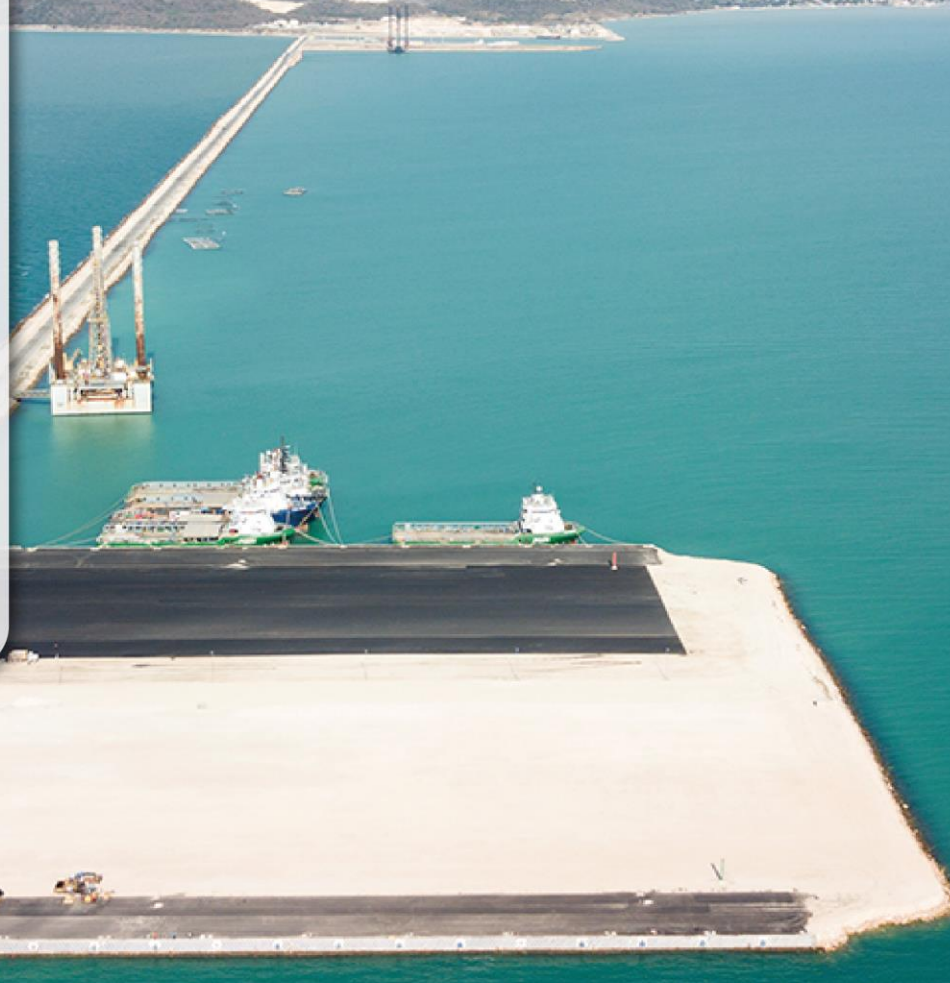
API
CAPITANIA
ADUANA
MIGRACIÓN
SENASICA



PORT OF SEYBAPLAYA

Main activities inside de Port

- 1 Offshore supply**
- 2 Maintenance of drilling equipment**
- 3 Maintenance of oil rigs**
- 4 Maintenance of pipelines**
- 5 Scrapping of oil rigs, drilling equipment and ships**





PORT OF SEYBAPLAYA

Services

Services provided inside Seybaplaya Port:

1. Piloting
2. Mooring ropes
3. Provisioning
4. Fuel Supplying
5. Water supplying
6. Garbage collection
7. Sewage disposal
8. Repair of boats afloat
9. Maneuvers, loading, unloading stowage and transportation inside the port
10. Storage



PORT OF SEYBAPLAYA

New Infrastructure

Surface area: 17 acres
Docking Line: 450 yards
Draft: -20 feet



PORT OF SEYBAPLAYA

Business Opportunities

- 1 Repair, maintenance and construction shipyards
- 2 Hydrocarbon storage
- 3 Storage of pipelines and oil equipment
- 4 Plants for drilling fluids
- 5 LP Gas terminal
- 6 Natural Gas Import

PRODUCTIVE TALENT AND HUMAN CAPITAL



248,303 Population

101,503 Active Population



Distribution:

85% Urban

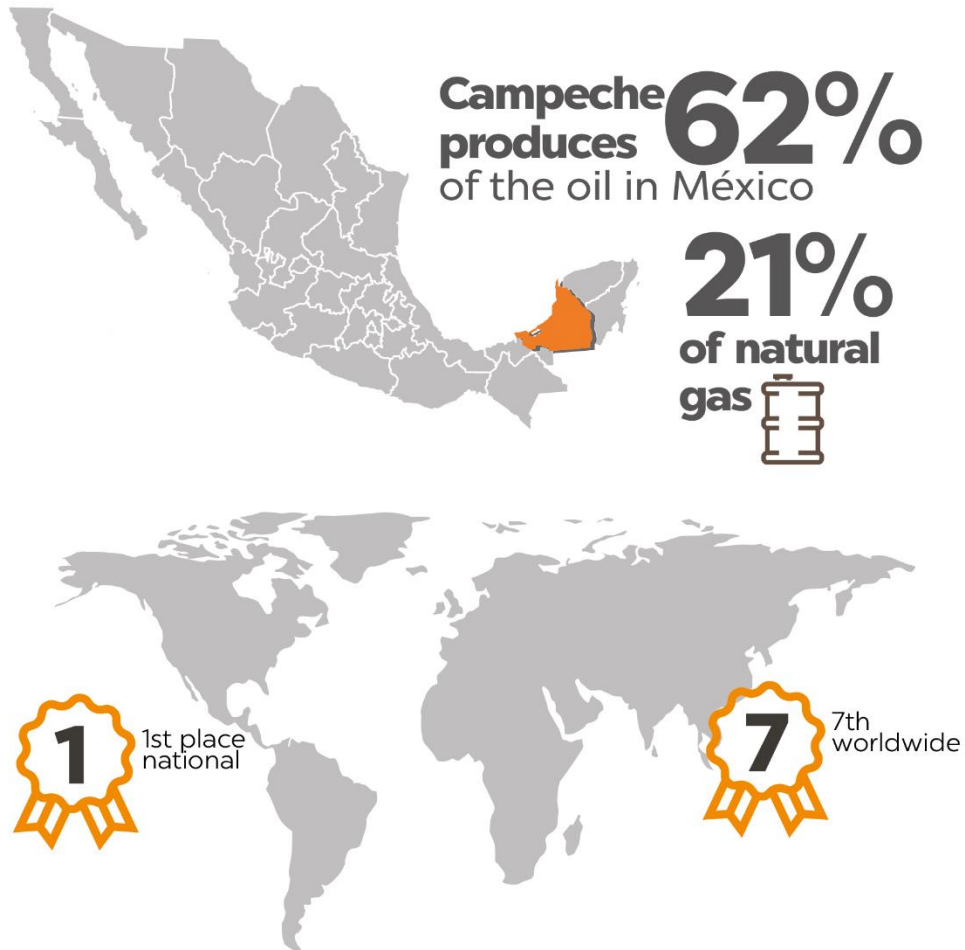
15% Rural

Young Population

53%

is younger than
30 years old

PRODUCTIVE TALENT AND HUMAN CAPITAL



PRODUCTIVE TALENT AND HUMAN CAPITAL

We have a supply system of more than 700 companies offering a wide range of services to the hydrocarbon industry:



Most of these services are focused on: Maintenance, Engineering and associated services and transportation services.



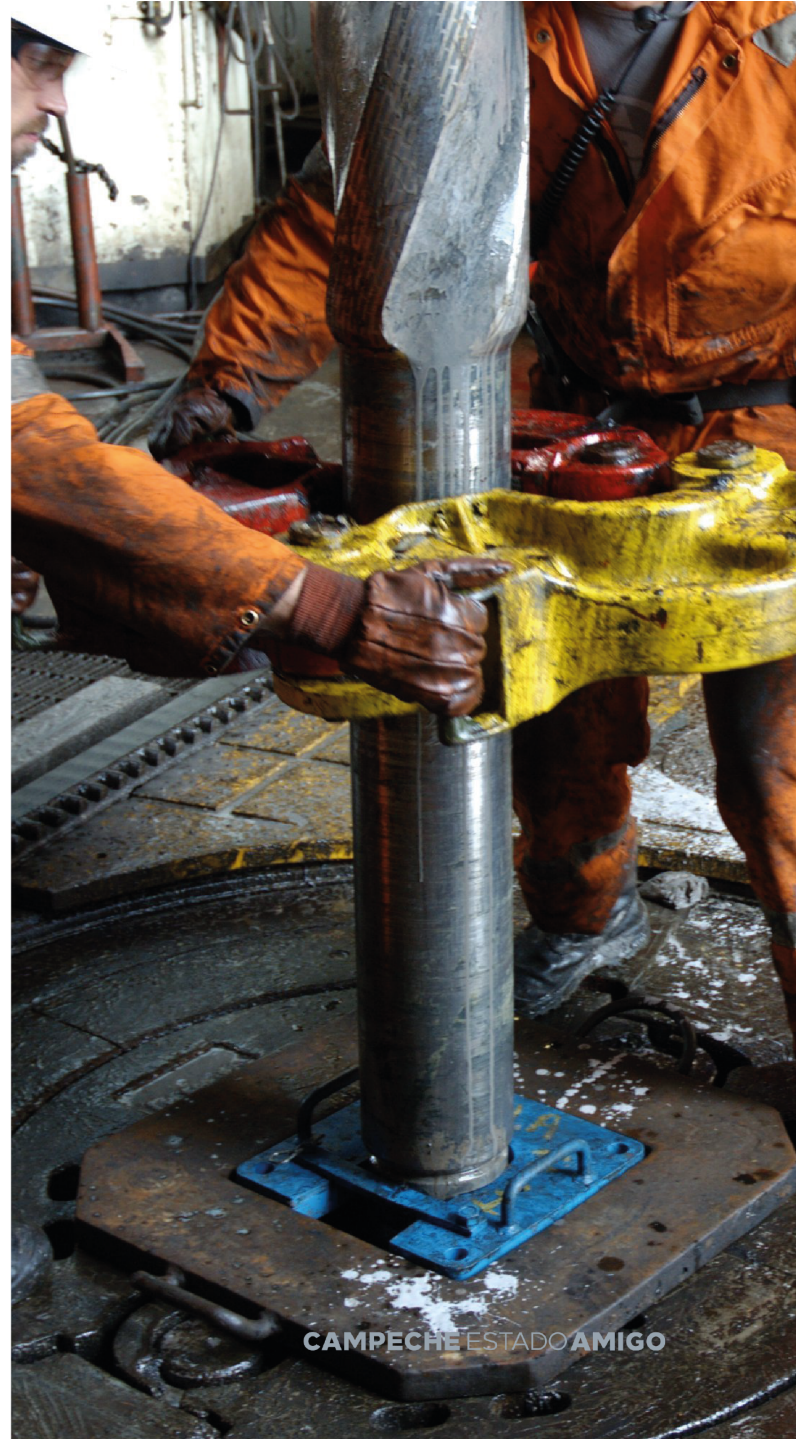
Industrial instrumentation
(Measuring and Control systems)



Electrical Equipment



Industrial Structure & Pipes
(Manufacturing solutions for piping, modules and valves)



PRODUCTIVE TALENT AND HUMAN CAPITAL

Goods & Services offered to the oil industry

Oil spillage detection
Drilling fluids services
Well stimulation
General services on site
General lining
Architectural Finishes
Module manufacturing processes
Air conditioning
Engine-Internal combustion
Pipes-General
Valves
Pressure Test Services
Control Panels
Electric Equipment
General Lighting
Control Systems
Distributed Control Systems/ SCADA
Programmable Logic Controller
Emergency Stop System (ESD)
Measuring System
Gas & Fire Monitoring
Analysis Tools
Vibration Analysis
Pressure Indictors
Pressure Transmitters
Peek Flow Meters
Temperature Transmitters
Contractors
Mechanical Contractors
Subsea Pipelines

Instruments & Control
Petroleum engineering
IT Systems
Materials
Logistics
Transport Services
Dock Services
Custom Services/Security
Training Services
Crane Services
Welding Services
Metalmechanic Services
Repair & Maintenance Services
Storage
General Maintenance
Food Services for Personnel
Office Services (administrative)
Inspection & Certification Services
Construction Equipment for Rent/Sale
Maintenance Services
Chemicals For General Uses
Industrial Supplies
Service Tools
Industrial Gases
Containers/Packages/Boxes
Marketing
Accommodation/Housing (Rent/Sale)
Oil & Natural Gas Exploration



AEEC

ENERGY AGENCY OF THE
STATE OF CAMPECHE

It is a decentralized public organism of the public administration with its own capital and operational autonomy, who is sectorized to the Secretariat of Sustainable Energy Development of the State of Campeche

Objectives

To promote the Energy Development of The Entity

To promote public-private co investment and the formation of energy markets

To build linkages between State and local institutions and the Federal Government

To Establish financial vehicles and public-private partnerships to attract investments in energy projects

To manage energy projects and deal with State and local authorities





CAMPECHE **FRIENDLY** STATE

SEDECO
GOBIERNO DEL ESTADO
CAMPECHE 2015-2021



CRECER EN GRANDE
CAMPECHE 2015-2021

