



# THE FUTURE IS CURVED

*Welcome – IRO & special guests*

KERSTEN NEDERLAND

25-06-2024





# Leden Ontmoeten Leden bij KERSTEN

## Programma:

**14.30 - 15.45 uur:**

- Opening
- **Pitches** (nieuwe) leden
- Presentatie gastheer **KERSTEN** en gastspreker **GBM Works**

**15.45 - 16.30 uur:**

Rondleiding

**16.30 - 17.30 uur:**

Netwerkborrel





# IRO verwelkomt de volgende leden voor een pitch:



Naam bedrijf:	Pitchhouder:
➤ Atlas Copco Rental Nederland	▪ Frank van den Heiligenberg
➤ Dyneema®	▪ Judith Bosch
➤ MP Holland / GD-iTS Group	▪ René de Kock
➤ Voortman Steel Machinery	▪ Bas Kreijkes
➤ Vos Prodect Innovations	▪ Marc Derks
➤ VoTech Filter	▪ Stephanie van Ooijen





# KERSTEN AT A GLANCE


*Together, we are ONE company, ONE team with ONE purpose:  
Becoming the world's most dynamic and efficient company in bending technology.*



**1 COMPANY**  
4 locations worldwide



**2 TECHNOLOGY DIVISIONS**  
- aluminium  
- steel



**200+**  
**EMPLOYEES**



## KEY MARKETS



THE NETHERLANDS

GERMANY

POLAND



UNITED ARAB  
EMIRATES

EXCELLENCE  
CREATIVE  
SOLID

# TEAM PLAYERS

*By working together, we multiply our success. We find it important that each person and party can be the best in their field to enable the optimal outcome for everyone.*



# NIEUWBOUW HQ KERSTEN



# NIEUWBOUW HQ KERSTEN





# KERSTEN (MIDDLE EAST)

*New facility (factory, terrain, offices)*



# HSE DEN HAAG

*3D curved RHS for railway station*





## **BURJ KHALIFA**

11,000m stainless steel tube for the world's tallest skyscraper



# STATIONSPLEIN OOST

*Utrecht CS*



# LUIFEL HOOG CATHARIJNE

*Complete fabrication*



# ENTREE AMSTERDAM

*Lightrails ready to install*



# ALSTOM TGV

*Bent and machined side wall profiles*





## Medical

Bent and  
machined profiles  
for X-ray devices





# STAINLESS STEEL AUTOCLAVE

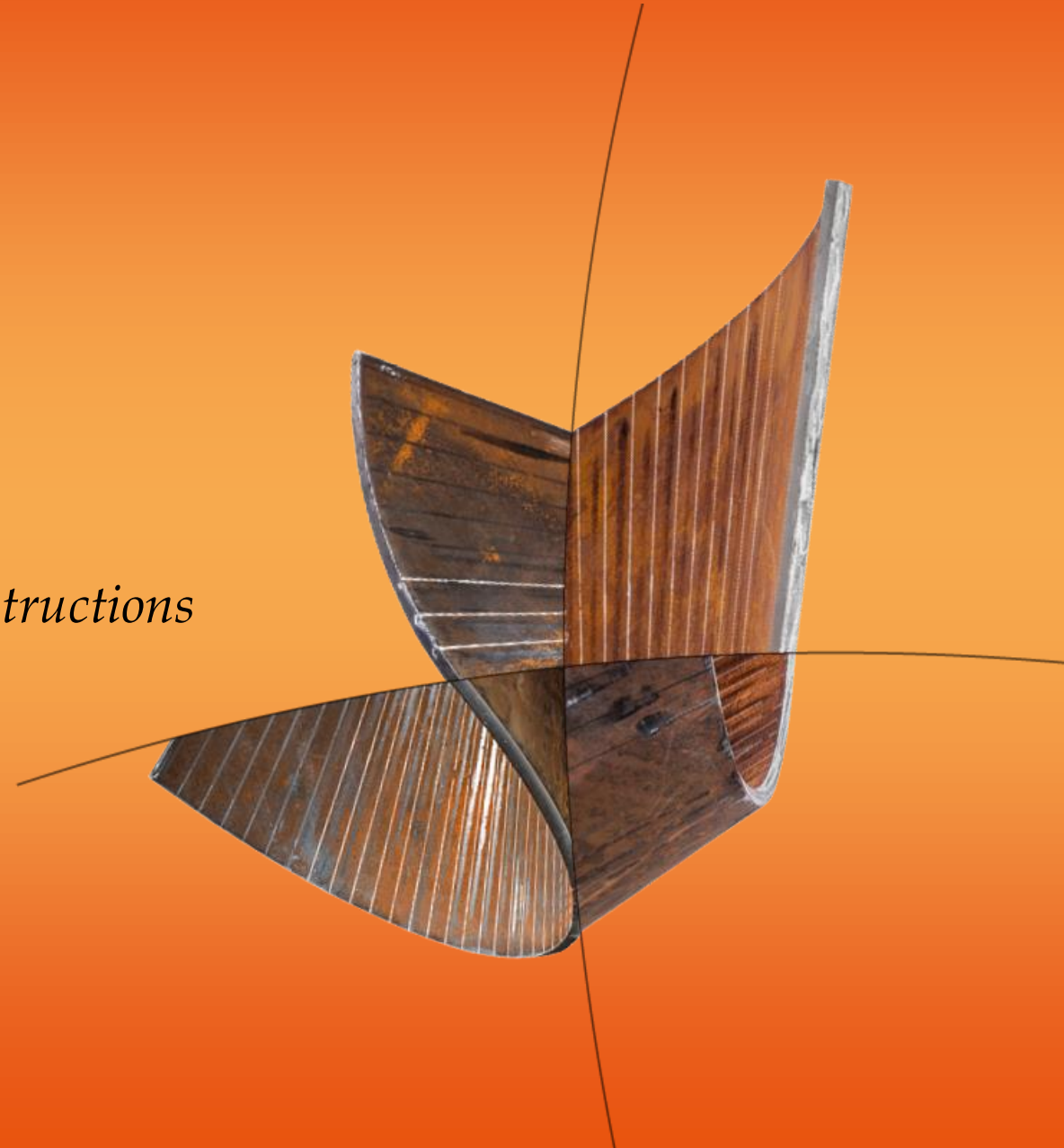
*Plate assembly*





# STEEL INDUSTRY - OFFSHORE

*J-tubes, Spudpiles, Cones, Renewable Energy Constructions*



# OFFSHORE ENERGY

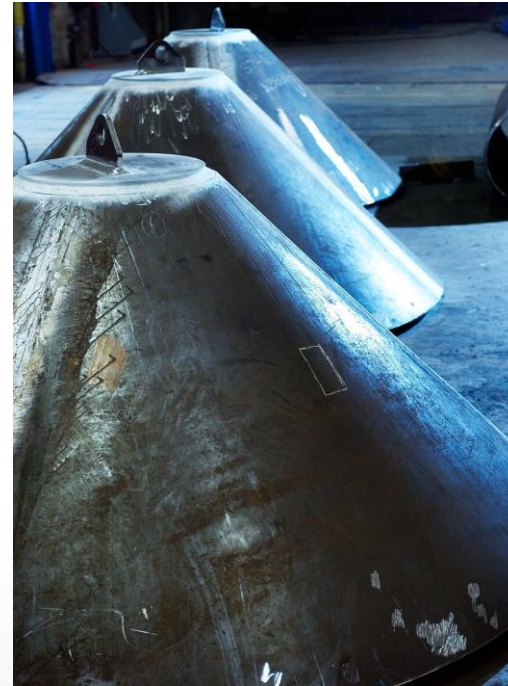
*It is not just bending metal we are shaping the future*



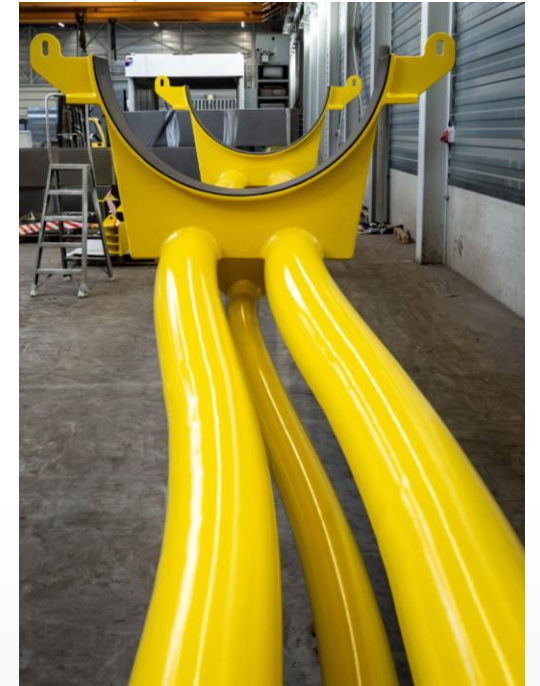
TUBULARS



J-TUBES



CONES



CONSTRUCTIONS

# OFFSHORE WIND

## Tracklist

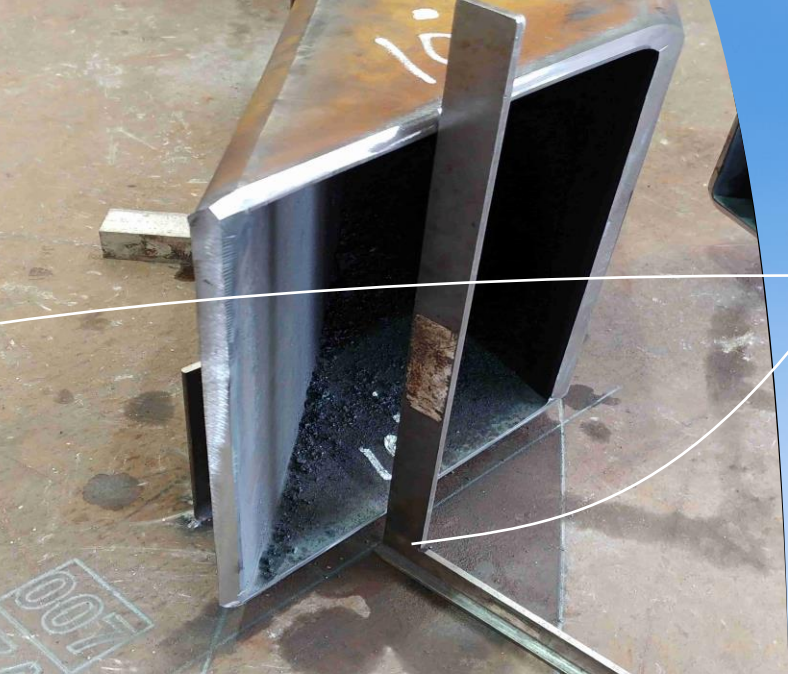
Project	Location	Description
<b>Akita noshiro TP</b>	Japan Sea, JPN	UNP 200, Fi 219,1x10
<b>Amrumbank</b>	North Sea, DE	Access platforms
<b>Anholt Offshore OWF</b>	Kattegat, DK	Access platforms
<b>Arcadis Ost</b>	Baltic Sea, GE	J-tubes, anode cages
<b>Baltic Eagle OSS</b>	North Sea, DE	J-tubes, Cones
<b>Baltic II OWF</b>	Baltic Sea, DE	RHS 400x200x12.5 Access platforms, anode cages
<b>BARD Offshore 1</b>	North Sea, DE	Cathodic protection system
<b>Beatrice OWF</b>	North Sea, UK	J-tubes
<b>Blight Bank II</b>	North Sea, BE	J-tube cage
<b>Borkum Riffgrund 3 OWF</b>	North Sea, DE	Cones
<b>Borkum</b>	Atlantic Ocean, USA	Cones, L100x100x6, RHS 100x50x6
<b>BorWin Beta – High Voltage Station</b>	North Sea, DE	Cable access towers
<b>Burbo Bank</b>	Irish Sea, UK	Bellmouths, cones
<b>Butendiek - Converter Platform</b>	North Sea, DE	J-tubes
<b>Dan Tysk – Substation</b>	North Sea, DE	Complete J-tube construction
<b>Doggerbank</b>	North Sea, UK	Fi 355,6x16, flats 277x60
<b>DolWin Alpha - Converter Platform</b>	North Sea, DE	Stabbing Cones
<b>Dolwin Gamma - Converter Platform</b>	North Sea, DE	Complete J-tube construction
<b>Dong Hejre Jacket</b>	North Sea, DK	Stabbing Cones
<b>East Anglia One OWF</b>	North Sea, UK	J-Tubes
<b>Gemini</b>	North Sea, NL	Flat Bars
<b>Greater Changhua OWF</b>	Taiwan Strait, TW	Offshore levelling tool, installation template
<b>Gunfleet Sands</b>	North Sea, UK	J-tubes
<b>Gwynt y Môr</b>	Irish Sea, UK	Access platforms
<b>HelWin Alpha – High Voltage Station</b>	North Sea, DE	Cable access towers
<b>HelWin Beta - Converter Platform</b>	North Sea, DE	Cans & Cones for platform decks
<b>Hohe See OWF</b>	North Sea, DE	J-tubes
<b>Hollandse Kust Noord OSS</b>	North Sea, NL	J-tubes
<b>Hollandse Kust west Alpha OSS</b>	North Sea, NL	J-tubes
<b>Hollandse Kust west beta OSS</b>	North Sea, NL	J-Tubes, Cones
<b>Hollandse Kust Zuid</b>	North Sea, NL	RHS 250x100x10, Fi 114,3x7,1
<b>Humber Gateway OWF</b>	North Sea, UK	J-tubes, bellmouths
<b>Johan Sverdrup</b>	North Sea, NO	Drilling template cones and cans
<b>Kårehamn</b>	Baltic Sea, SE	Complete J-tube construction
<b>Kentisch Flats Extension</b>	North Sea, UK	Access platforms
<b>Kincardine OWF</b>	North Sea, UK	L-bars for floating foundations

Project	Location	Description
<b>Kriegers Flak OWF</b>	Baltic Sea, DK	Cones
<b>Lincs</b>	North Sea, UK	J-tubes, maintenance platforms
<b>London Array I</b>	North Sea, UK	J-tubes
<b>London Array I</b>	North Sea, UK	J-tubes
<b>Lynn &amp; Inner Downsing</b>	North Sea, UK	J-tubes
<b>Meerwind</b>	North Sea, DE	Access platforms
<b>Moray East OWF</b>	North Sea, UK	J-tubes
<b>Neart Na Gaoithe (NNG)</b>	North Sea, UK	J-tubes, S-tubes
<b>Northwind</b>	North Sea, B	J-tubes, S-tubes, bellmouths
<b>Ocean Wind</b>	Atlantic Ocean, USA	Cones, L100x100x6, RHS 100x50x6
<b>Q7 Princess Amalia</b>	North Sea, NL	J-tubes
<b>Rampion</b>	North Sea, UK	Platforms and flat bars, heavy cones
<b>Rentel OWF</b>	North Sea, B	J-Tubes
<b>Rhyl Flats</b>	North Sea, UK	J-tubes
<b>Riffgat - Converter Platform</b>	North Sea, DE	J-tube constructions
<b>Sheringham Shoal</b>	North Sea, UK	J-tubes, bellmouths, platforms
<b>St. Brieuc OSS</b>	Saint-brieuc Bay, FR	J-tubes
<b>Southfork</b>	Atlantic Ocean, USA	Cones, L100x100x6, RHS 100x50x6
<b>SylWin Alpha – Converter Platform</b>	North Sea, DE	Complete J-tube construction
<b>Teesside</b>	North Sea, UK	J-tubes, bellmouths, platforms
<b>Thanet I</b>	North Sea, UK	J-tubes, bellmouths, platforms
<b>Thanet II</b>	North Sea, UK	J-tubes, bellmouths, platforms
<b>Thornton Bank</b>	North Sea, B	J-tubes, bellmouths, platforms
<b>Trinton Knoll</b>	North Sea, UK	SHS 150x150x7, Fi 114,3x7,1
<b>Veja Mate</b>	North Sea, DE	J-tubes and bellmouths
<b>Vineyard OWF</b>	Atlantic, USA	RHS 400x200x12.5 Access platforms
<b>West of Duddon Sands</b>	Irish Sea, UK	J-tubes
<b>Westermost Rough</b>	North Sea, UK	J-Tubes, bellmouths
<b>Wikinger OWF</b>	Baltic Sea, DE	Cones
<b>Windfloat Atlantic</b>	Atlantic, Portugal	L-bars for floating foundations
<b>Windpark Blauw (nearshore)</b>	IJsselmeer, NL	Complete J-tube construction
<b>Yunlin</b>	Taiwan Strait, TW	UNP 180, UNP160

# OFFSHORE WIND FOUNDATION CONSTRUCTIONS

*Support structures offshore wind energy projects*





**Access platform  
components**

Up to RHS 500x300



**J-tube  
construction**

J-tube + bellmouth  
assembly

# JACKET CONES

- *Cut from gross plate*
- *Rolled to cones*
- *Longitudinal weld*
- *Cut to size using robot technology*
- *Small end with V-chamfer*
- *Large end with 3D cut*





# KINCARDINE



*Floating wind turbine foundation,  
for world's largest floating wind farm*



## INDUCTION BENDS

Unlimited bending  
radius

*Max. capacities:*

SHS 500 x 500 x 25mm  
RHS 600 x 400 x 25mm



CHS 1016 x 50mm  
508 x 80mm

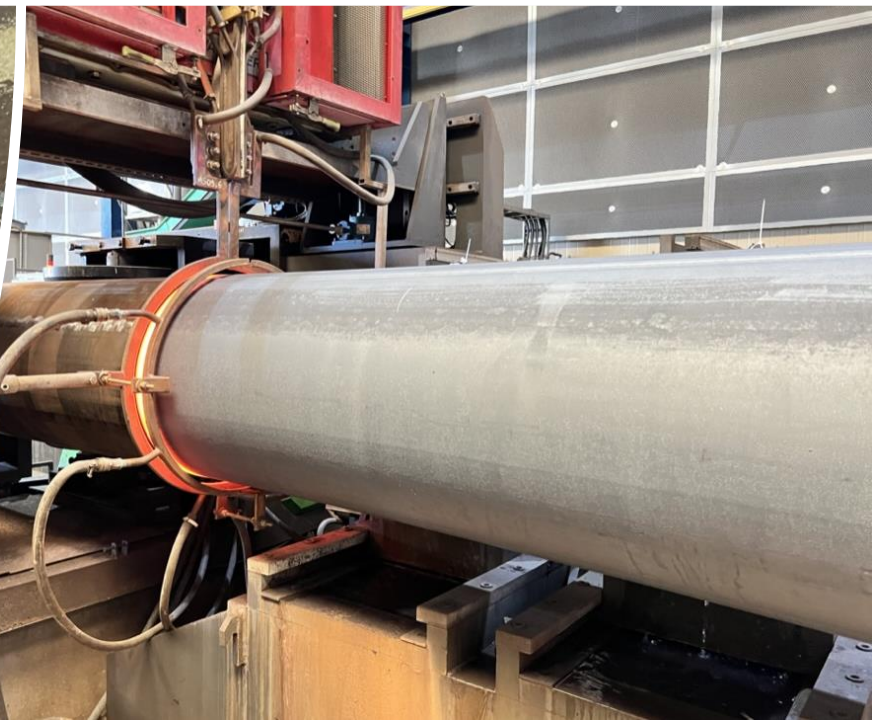


HEA 1000  
IPE 1000





# INDUCTION BENDS



## J-tubes

Offshore wind cable guides from bent tube, rolled plates and welded acc. applicable offshore standards



## J-tubes

Offshore wind cable guides from bent tube, rolled plates and welded acc. applicable offshore standards



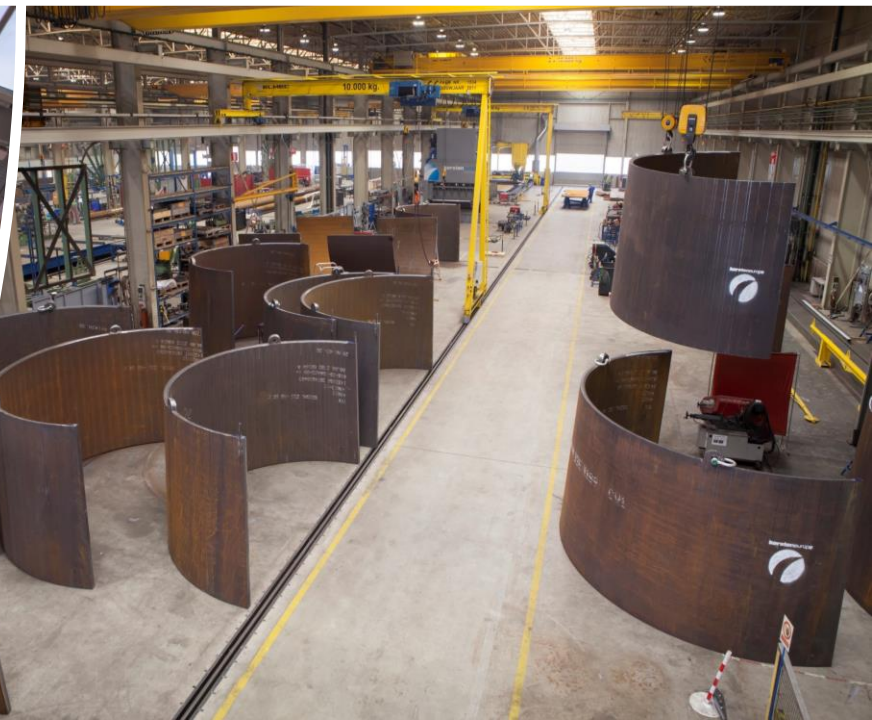
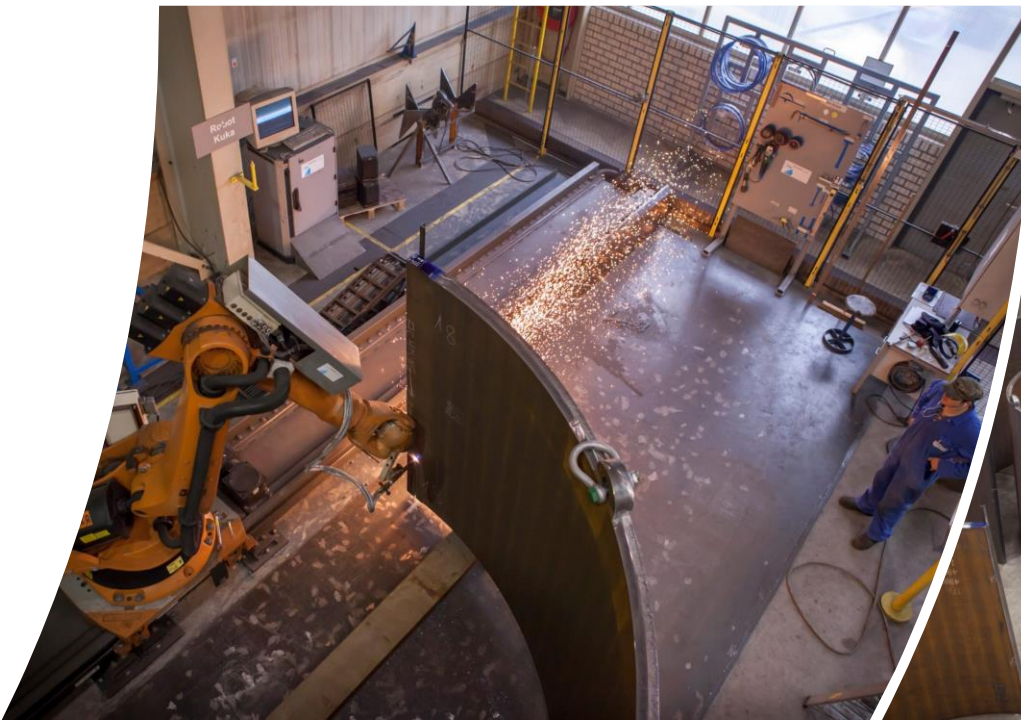
## Bellmouth

Rolled from cut plate including welding acc to offshore standards

# HEAVY CONICAL SHELLS

*Serial production of XXL diameter cones  $t = 80 - 150\text{mm}$*

- Cut from gross plate*
- Pressed to cones (2400T)*
- Cut to size using robot technology*





# ROBOT CUTTING



# CASING – ROTARY DRILLING RIG

*Casing Ø3100mm x 50mm*

- *Cut from gross plate*
- *Rolled to cylinder*
- *Longitudinal welded*
- *Cut to size using robot technology*
- *Small end with V-chamfer*
- *End with 3D cut for inserts*





**Pin piles**  
**Pile sleeves**  
**Jacket legs**

Max. 60m length  
Max. 200T

# TUBULARS



# TUBULARS



# TUBULARS



# OFFSHORE LEVELING TOOL

*S460 grade acc. to  
DNVGL standards*



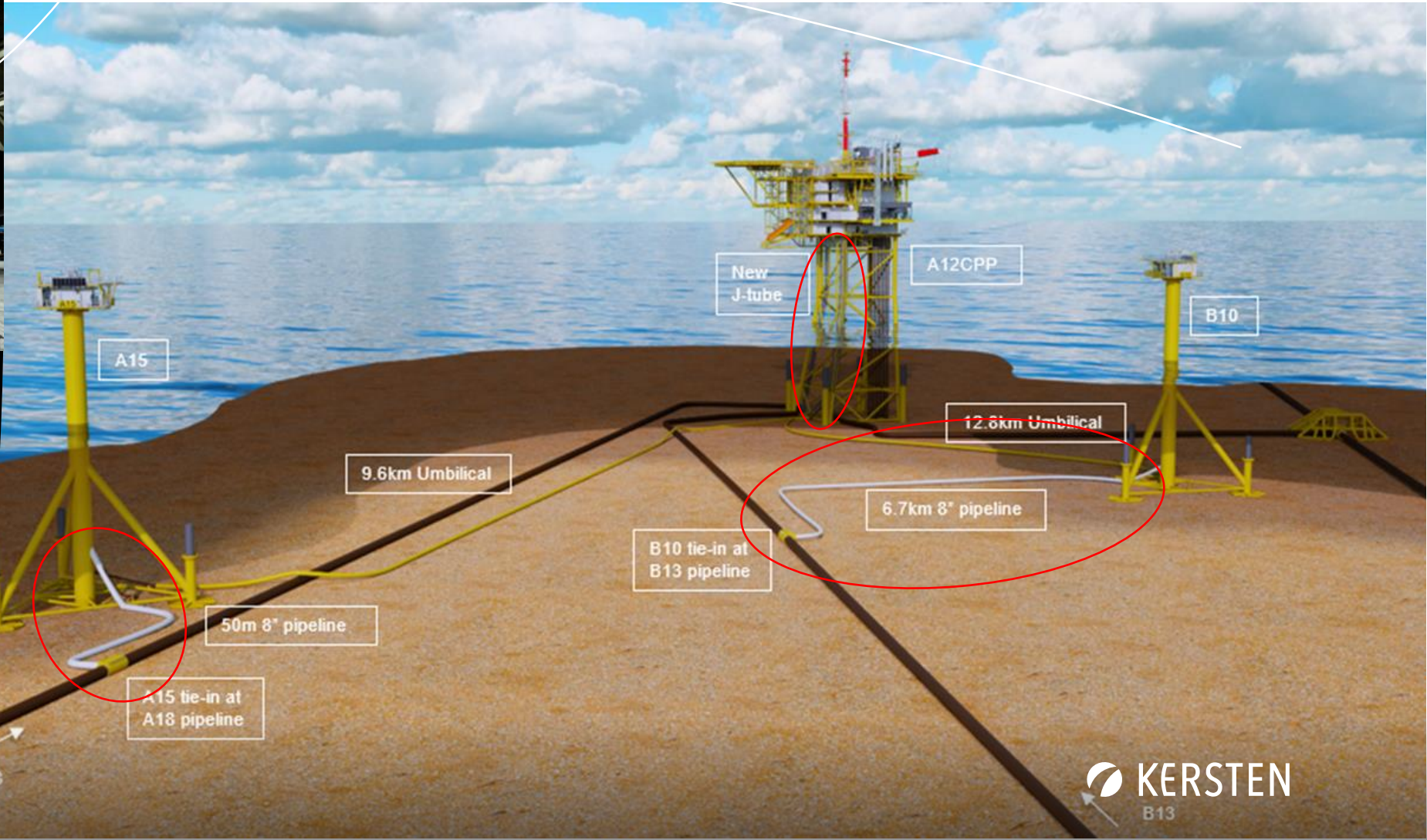
# PROJECT CASE: J-TUBE

*Pre-assembly*





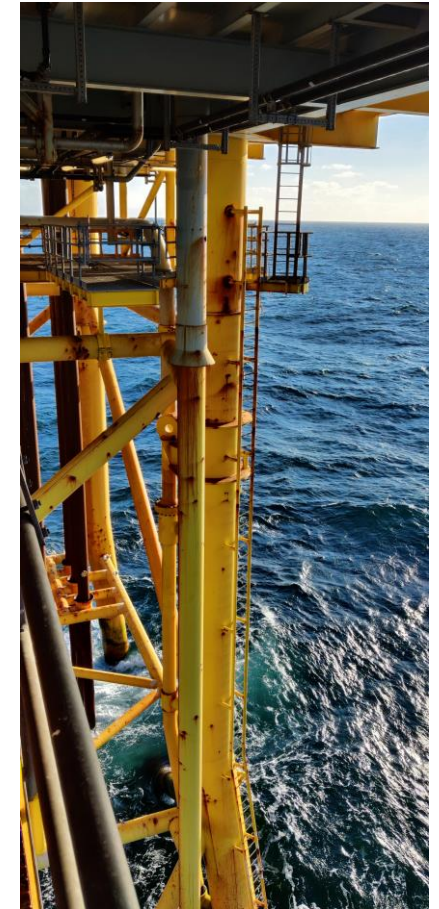
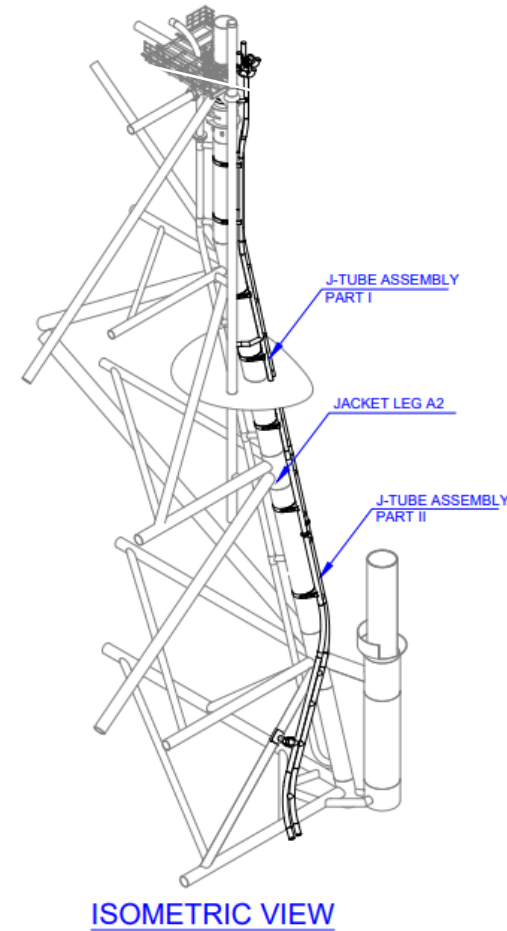
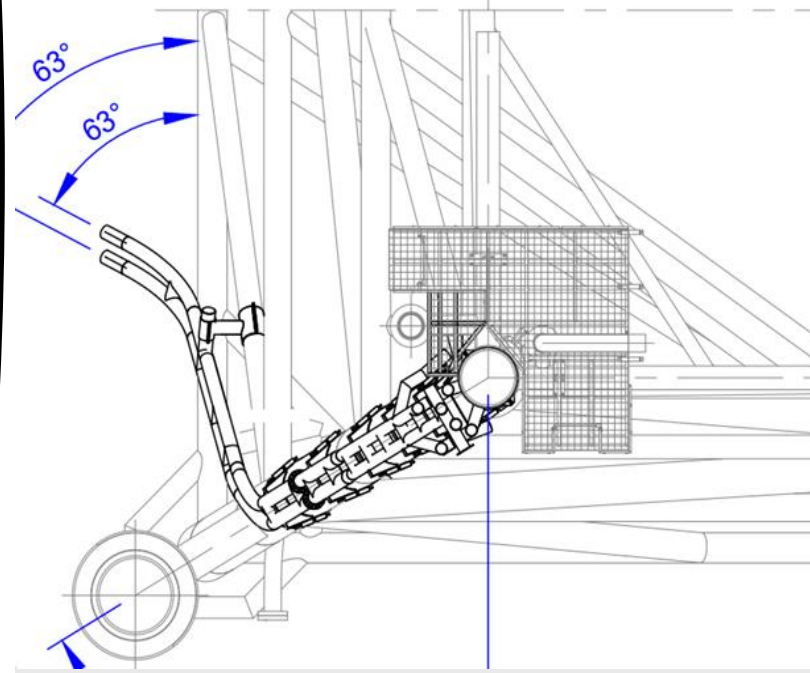
# Project case: J-tube construction



## Scope:

- J-tube construction
- Hang-off Riser
- Pipeline bends

# Project case: J-tube construction



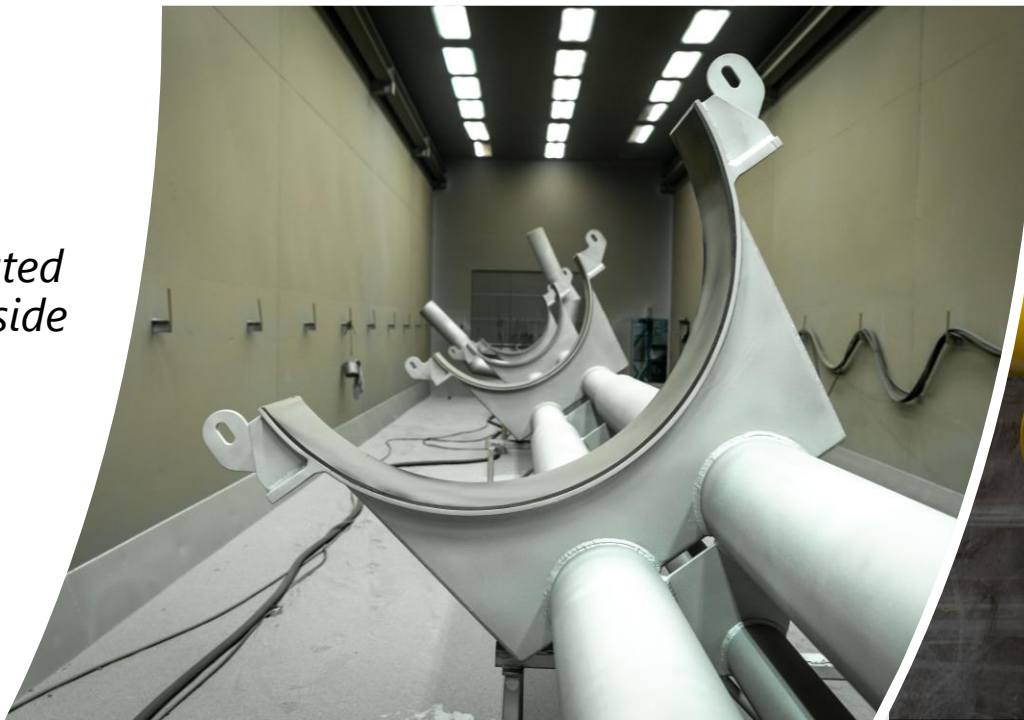
## Scope:

- J-tube construction
- Hang-off
- Riser
- Pipeline bends

## PROJECT CASE: PETROGAS

*55m long J-tube curved over the existing jacket leg.*

- *Ø355 tube*
- *Clamps Ø1400*
- *Vulcanized clamp ring*
- *Full construction sand blasted and coated outside and inside*



# PROJECT CASE: J-TUBE

*Pre assembly*



# PROJECT CASE: J-TUBE

*Pre assembly*



# PROJECT CASE: J-TUBE

*Pre assembly*



# PROJECT CASE: J-TUBE

*Coating*




# PROJECT CASE: J-TUBE

*Installation*







Ground  
Breaking  
Machines

# Introduction to GBM Works and the support of Kersten

---

SIMPLE III Project

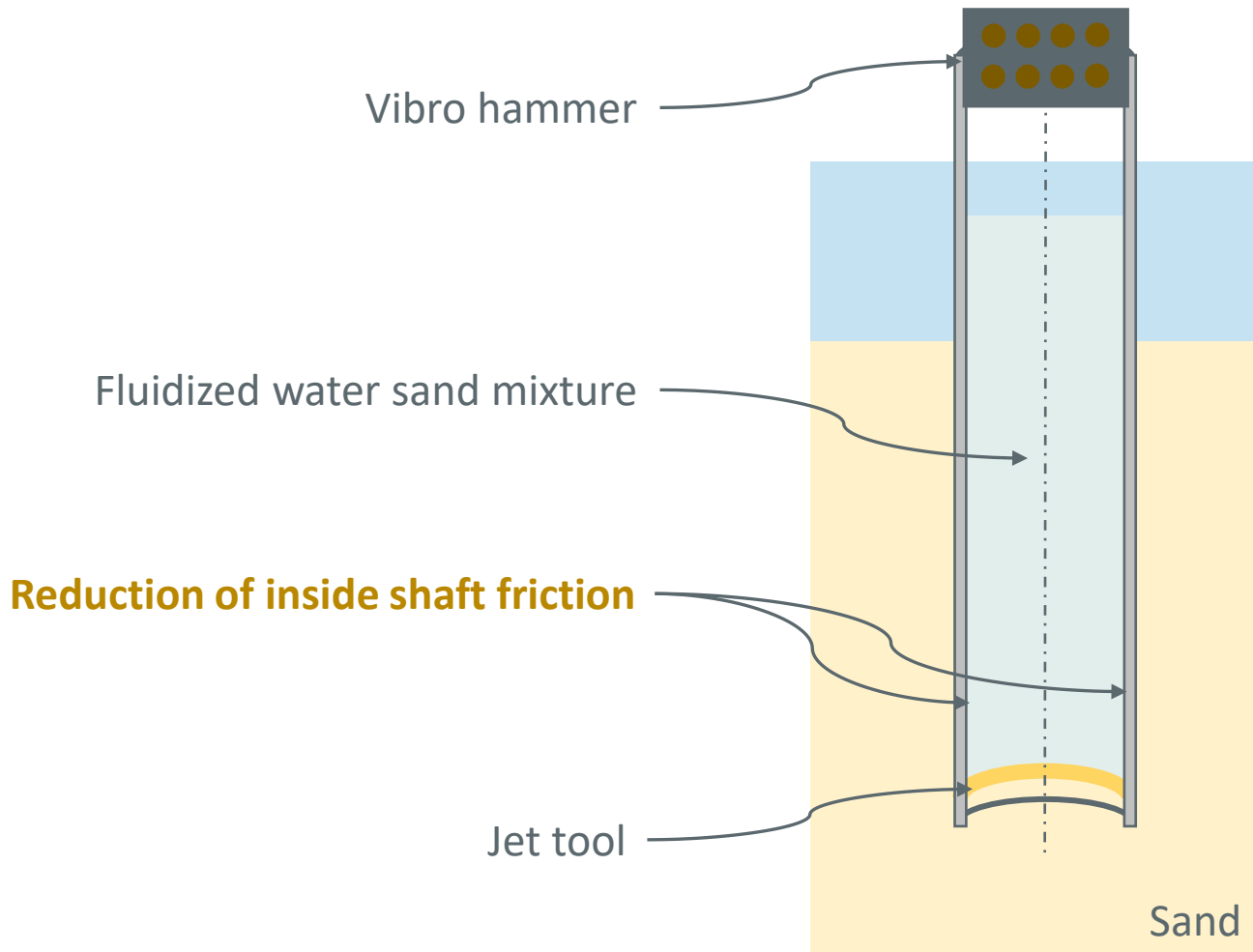
# GBM *Works*

26/06/2024

# Problem: Harmful noise during installation



# Solution: the Vibrojet®



With the Vibrojet®



Without the Vibrojet®

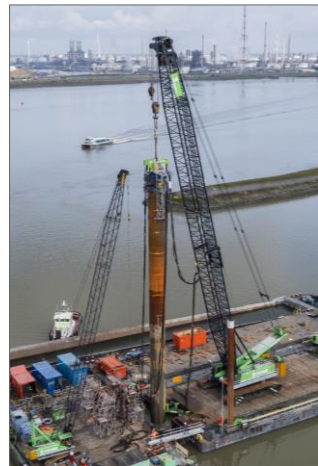


# Vibrojet® - Development and Commercialization

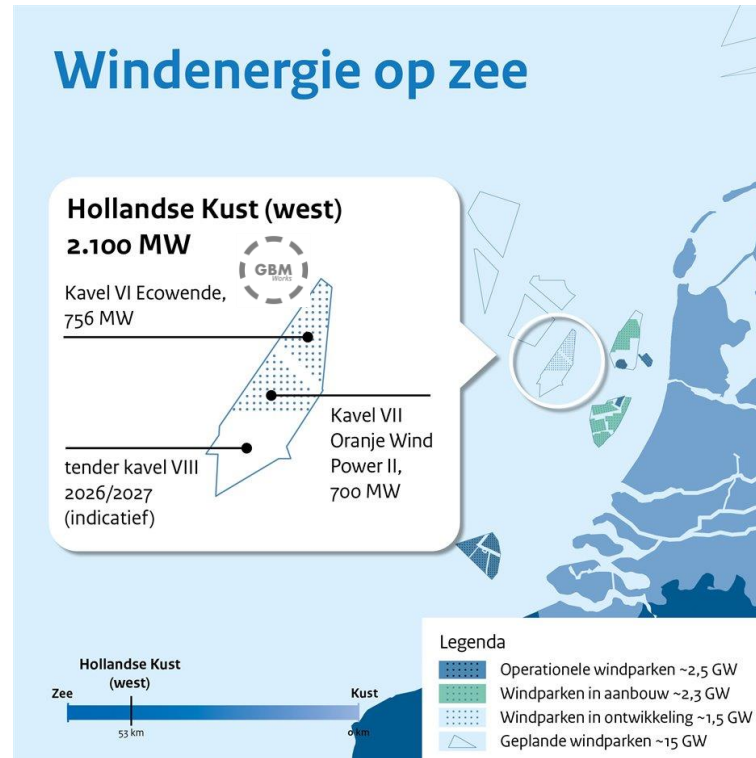
## Development



Nearshore



## Commercialization



# Kersten at SIMPLE III

---

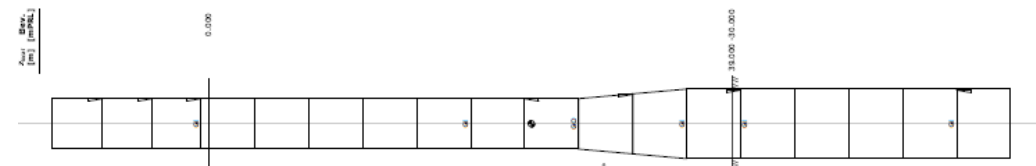
Why did GBM Works choose Kersten?

Top 4 reasons:

- Bending expertise
- Price/Quality/Time/Communication
- Flexibility
- Strategic long-term value.



SIMPLE I Jetring prototype



The SIMPLE III monopile, under production, will be visible to the audience during the tour.





## Question?

---

Marcelo Werneck

Business Development Director

+31-623407167

[m.werneck@gbmworks.com](mailto:m.werneck@gbmworks.com)

# GBM WORKS WITH KERSTEN





# VEILIGHEIDSMAAATREGELEN

*Voor u en onze veiligheid*



Blijf bij uw gids en volg de instructies.



Blijf binnen de gele lijnen.



Wees alert op hijswerkzaamheden.



In geval van een calamiteit begeeft u zich naar de verzamelplaats op het terrein tot nadere instructies.



Informeer uw begeleider als u medische hulpmiddelen draagt die gevoelig zijn voor elektromagneten.

In de productieomgeving draagt u de volgende PBM's:

- Veiligheidsschoenen
- Veiligheidshesje
- Veiligheidsbril
- Gehoorbescherming (aanbevolen; niet verplicht)



Het maken van foto- en/of videobeelden is niet toegestaan.

# WE WENSEN U EEN PRETTIG BEZOEK

*Meer informatie [kerstengroup.com](http://kerstengroup.com)*

FOLLOW US:





HOE KOMT  
DAT DING  
ZOKROM?

KERSTEN?

TAK VAN DIE